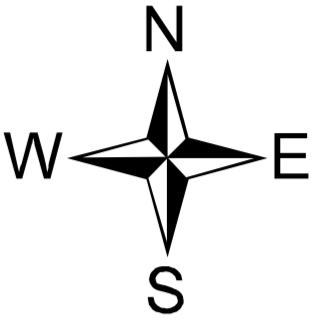
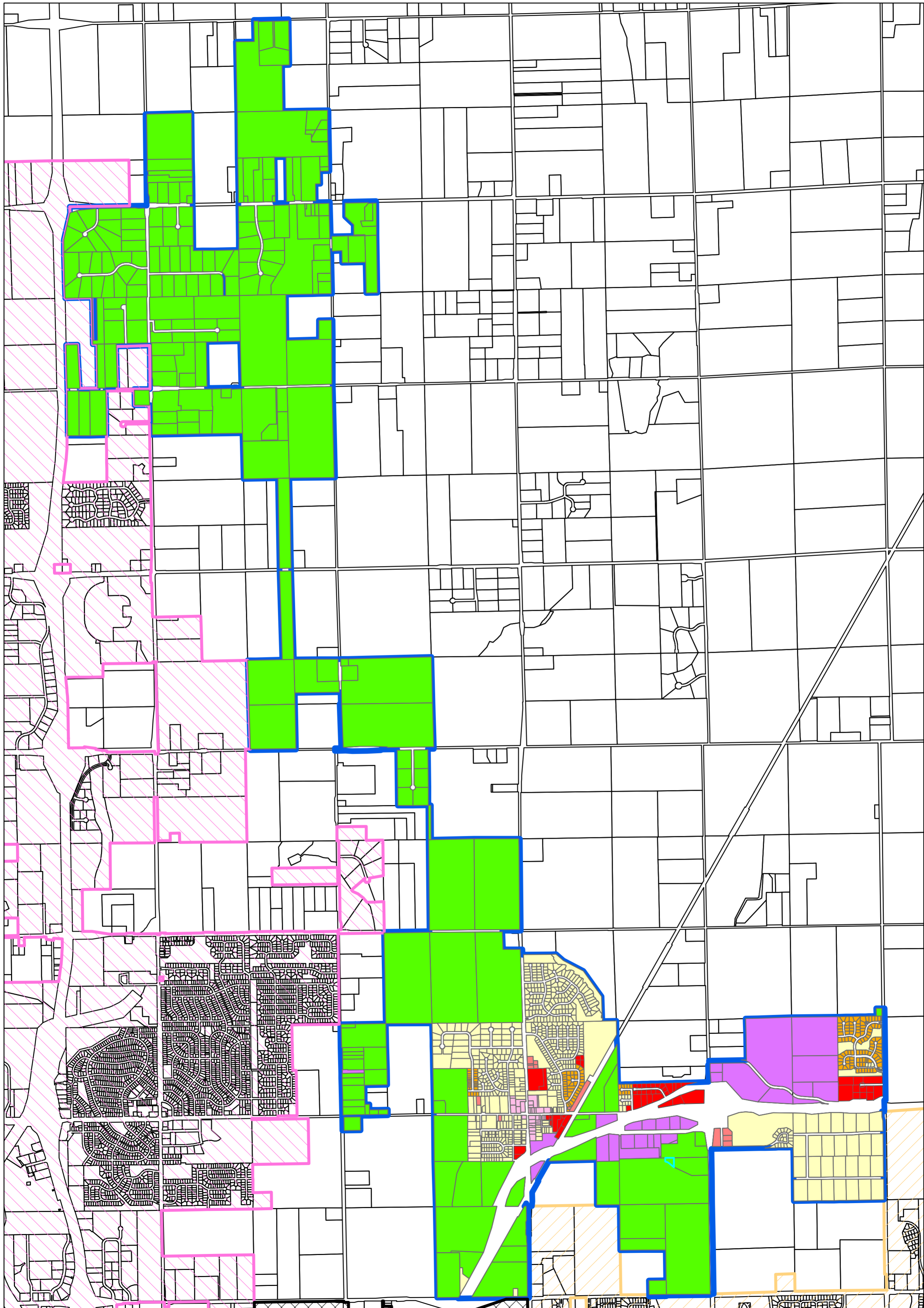


2019 City of Kechi Zoning Map



Kechi Zoning Legend	
	A-1 Agricultural
	R-R Rural Residential
	R-1 Single-Family Residential
	R-1A Single-Family ZLL Res.
	R-2 Multiple-Family Res.
	C-1 Special Commercial
	C-2 Light Commercial
	C-3 Heavy Commercial
	I-1 Industrial
City Limits	
	Kechi
	Bel Aire
	Park City
	Wichita

OFFICIAL COPY OF ZONING DISTRICT MAP
INCORPORATED INTO THE ZONING REGULATIONS
BY ADOPTION OF ORDINANCE NO. 1734-18 BY THE
GOVERNING BODY OF THE CITY OF KECHI ON THE
28TH DAY NOVEMBER, 2018
EFFECTIVE DATE: DECEMBER 6, 2018
MAYOR:
ATTEST: CITY CLERK

Zoning Map Updated August 24, 2019

Produced May 2019

GIS Data & Information provided by
Sedgwick County GIS Dept.

Produced by:
Chris Moran, Zoning & Subdivision Administrator